

A Project by Vishnu Priya Group



PARIMALA
Riviera
Opp. The Whitefield Club

Lead a Bindaas Lifestyle

in the heart of Whitefield





“For achievers in life, Parimala Riviera is the place to be. Take off to a global lifestyle and touch down at Whitefield in style.”

For a global citizen like you, here is an soothing environment to unwind and be all yourself.

Parimala Riviera is a dream home in Whitefield to accommodate your dreams and fantasies. The symphony of indoors and impeccably done outdoors invite you to the sought after residential destination in Bangalore.

PARIMALA
Riviera
Opp. The Whitefield Club





PARIMALA
RiViERA
Opp. The Whitefield Club



*Discover smartly designed outdoors
enhance your life and style*

Project Highlights

- ★ BBMP - approved project
- ★ Five-floor, 130 apartment project
- ★ 2 & 3-bedroom apartments
- ★ 1200 Sft - 1800 Sft areas
- ★ Deluxe quality construction
- ★ Vaastu compliant
- ★ No common walls
- ★ Elegant landscaping, Seating areas
- ★ Jogging track
- ★ Half Basket Ball
- ★ 24-hr Water supply
- ★ 24-hr Security with Intercom
- ★ Basement parking
- ★ Clubhouse amenities
- ★ Swimming pool with deck
- ★ Generator for Power back-up
- ★ Barbeque Deck
- ★ Amphitheater



Seating Area

Discover the many pleasures of leisure style living. Experience the grandeur of Mediterranean-inspired apartments at this happening destination. Indulge your senses and relish the ambience of spacious environment, while enjoying the contemporary features and amenities in the centrally located residence at Whitefield. Parimala Riviera is designed to touch the elements - air, sunshine, space, to maximize your comfort levels.

PARIMALA
Riviera
Opp. The Whitefield Club

Cocoon yourself in warmth and comfort

Parimala Riviera is one such beautiful edifice located on Whitefield main road yet cocooned away from its traffic. The elegant tower offers you more reasons to settle there. The finest getaway is home to luxury, recreation with hi-end amenities to meet residents' demands of balancing work life. The 100 ft corridor will shield you from traffic sounds of the highway making it an oasis of peace. Minutes away from Hope Farm Circle, the island of tranquility welcomes you to wonderful living.



PARIMALA
Riviera
Opp. The Whitefield Club



N
Site Layout Plan

Inspired living at Parimala Riviera

Parimala Riviera is a magnificent five-floor building offering 130 two and three bedroom apartments to a select clientele. Benchmarked to high quality, the apartments open the doors to a lifestyle rooted in comfort. Passionately built apartment homes are ideal for those working in Whitefield and around. At every step you will find finesse with brand fittings and elegant flooring. Functional spaces cater to every need of yours. Reboot your lifestyle in a world class destination that is envy for others and a home to you.



PARIMALA
Riviera
Opp. The Whitefield Club



Indulge 24x7



Lead an active lifestyle. An array of clubhouse facilities fills the thrills every day. Celebrate parties in multi-purpose hall with pantry facilities. If you love physical fitness, you'll enjoy pumping iron at state-of-the-art fitness center. Lounge on deck after a few laps of swimming in sparkling pool. Watch the time melting away in indoor games enclave. The families connect with neighbors who are as successful as you. Renew yourself every day at recreation zone.

Clubhouse Amenities

Swimming pool with deck area | Basketball court | Skating rink
Amphi-theater | Indoor games | Multi-purpose hall | Barbeque Deck

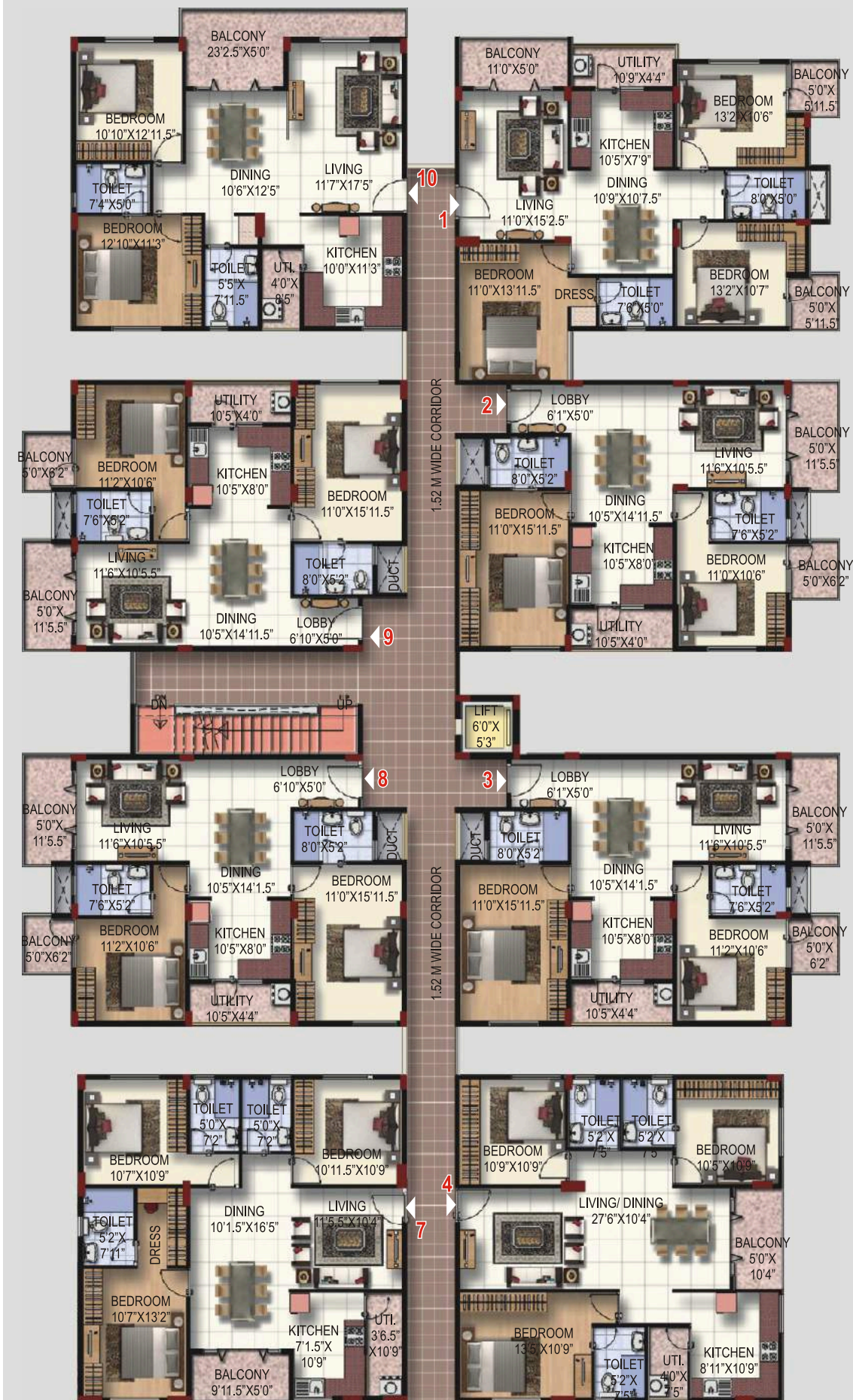
PARIMALA
Riviera
Opp. The Whitefield Club



Play Area



Barbeque Deck



BLOCK-A

Typical Floor Plan

Area Statement

Flat No	Area
1	1435 sft
2	1245 sft
3	1245 sft
4	1400 sft
5	1333 sft
6	1520 sft
7	1392 sft
8	1250 sft
9	1250 sft
10	1282 sft



BLOCK-B

Typical Floor Plan

Area Statement

Flat No	Area
11	1650 sft
12	1230 sft
13	1645 sft

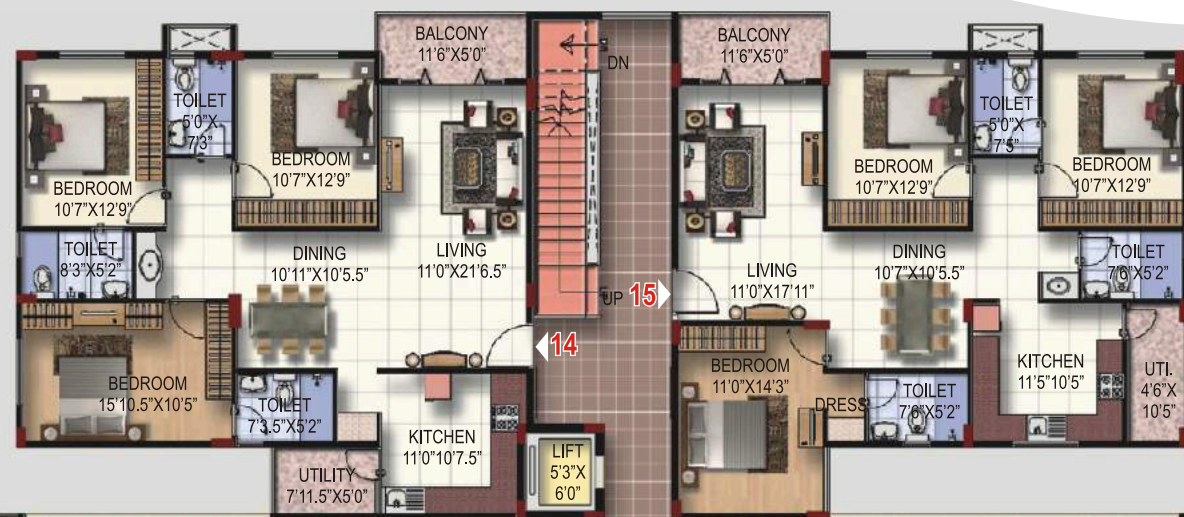


BLOCK-C

Typical Floor Plan

Area Statement

Flat No	Area
14	1640 sft
15	1595 sft
16	1140 sft
17	1255 sft
18	1255 sft
19	1140 sft

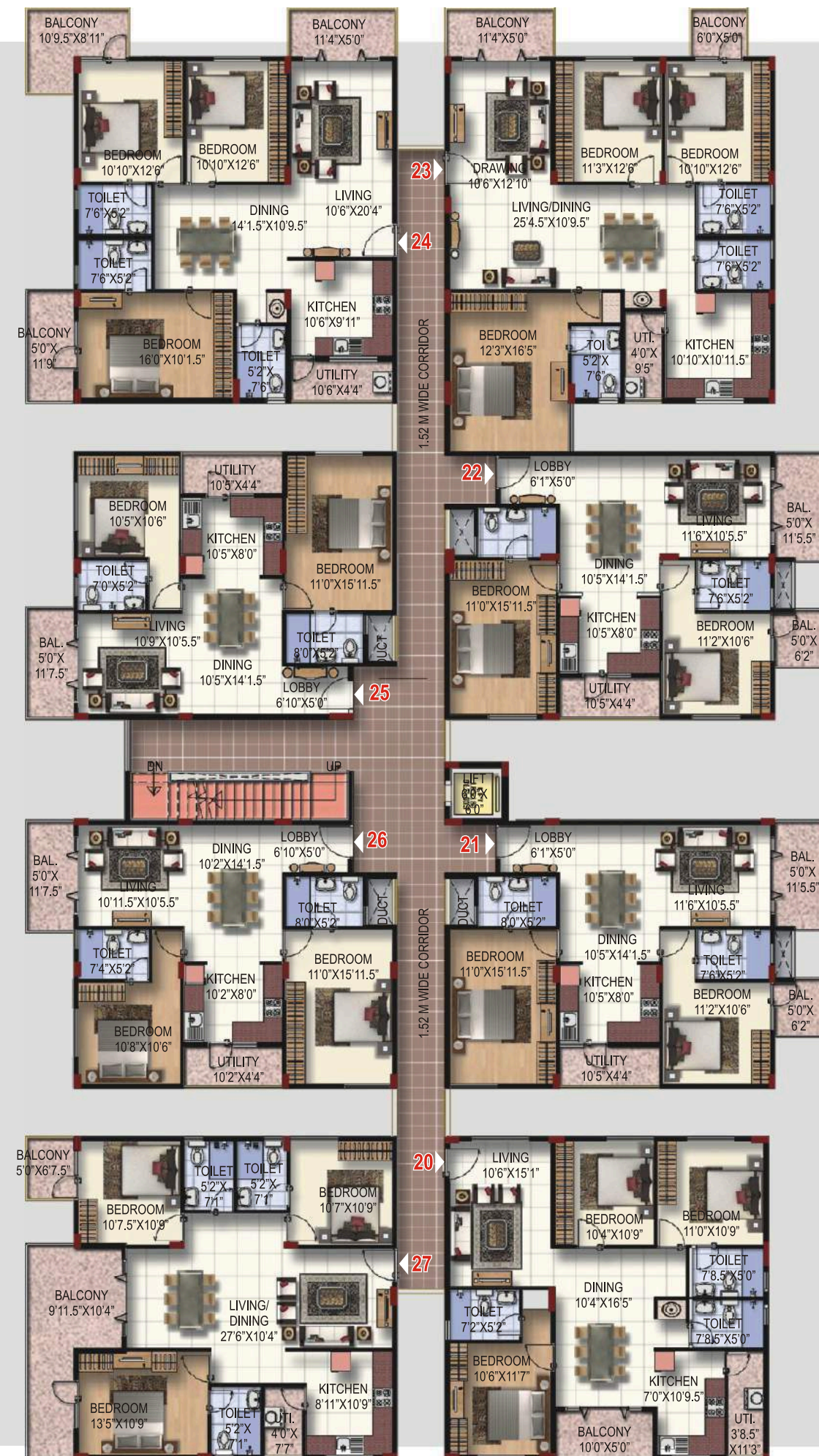


BLOCK-D

Typical Floor Plan

Area Statement

Flat No	Area
20	1392 sft
21	1245 sft
22	1245 sft
23	1730 sft
24	1610 sft
25	1115 sft
26	1115 sft
27	1400 sft

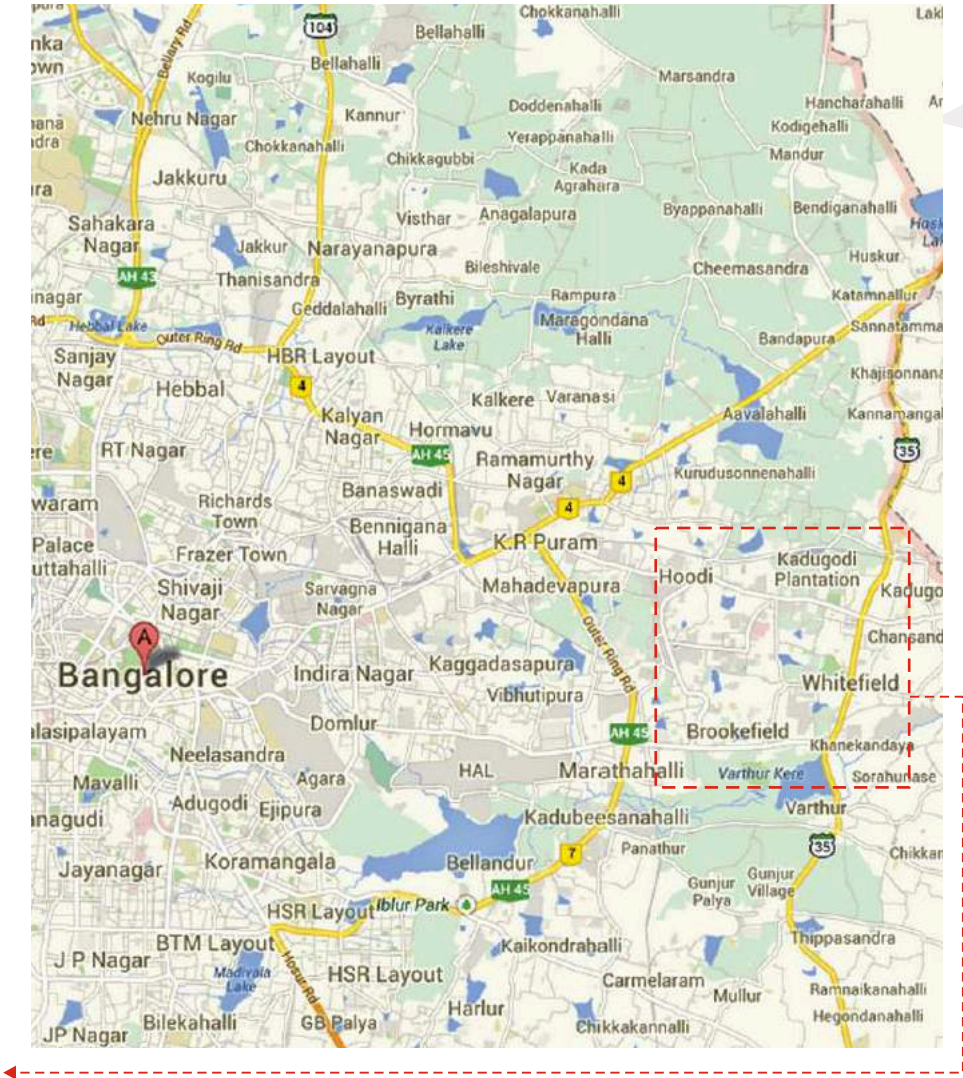




It's a world in itself



Working in ITPB at ten minute drive distance, first class shopping experience and reputed schools at a comfortable distance make your address a world class destination. The connectivity is excellent, be it a restaurants, work places or reputed schools. The life moves at a fast pace in this happening place. Discover young and cosmopolitan crowd in your neighborhood. Welcome if you belong to the world of achievers. You will enjoy more life per day than anywhere else.



The Whitefield Club



Central Park



ITPB

- Distances from site**
- Saibaba Hospital - 0.3 Km (walking distance)
 - Forum Value Mall - 1.5 Kms
 - Hope Farm Circle - 1.5 Kms
 - Whitefield Global School - 2 Kms
 - ITPB - 3.4 Kms
 - Whitefield Railway Station - 5 Kms
 - Vydehi Medical College & Hospital - 3.5 Kms
 - Hoodi Circle - 5.5 Kms
 - Kundalahalli Gate - 5.2 Kms
 - Marathahalli Bridge - 7.4 Kms



Specifications



STRUCTURE:

Seismic Zone II compliant structure and Cellular block masonry

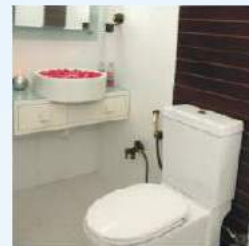
PLASTERING:

Internal walls: Smoothly plastered with putty
External walls: Two coats of cement plaster with sponge finish



FLOORING / CLADDING:

Common Lobbies: Granite flooring and cladding
Vitrified tiles - 600 mm x 600 mm of Johnson/ Kajaria make in all the rooms
Balcony tiles 300mm x 300mm anti-skid flooring



DADOING TOILETS:

Glazed tiles dado with false ceiling

KITCHEN:

2ft designer glazed tiles dado above the kitchen platform



JOINERES

MAIN DOOR:

Shoba doors of 32mm thickness with standard architrave with standard fittings with Godrej Lock (computerized key)

OTHER DOORS:

Shobha doors of 30mm thickness with standard architrave with standard fittings with Godrej/ Kasa Cylinder lock



TOILET DOORS:

Shobha doors of 30mm thickness with one side Masonite with architrave and inside 8mm thick PVC water-proof sheet, fitted with reputed make hardware with Godrej/ Kasa Cylinder lock



WINDOWS:

UPVC Sliding type with standard gauge and reinforcement with mosquito net with standard hardware

SANITARY WARE & BATHROOM FIXTURES:

Bathrooms: Wall mounted EWC of Hindware or equivalent make with concealed flush valve (ESS-ESS make) of Hindware make in all bedroom toilets. C.P. fittings of Jaquar/ Hindware make

POWER BACK UP:

Automatic Changeover Switch

TV POINTS:

Living room and Master bedroom

TELEPHONE POINTS:

Living room and Master bedroom

FIRE RESISTANT WIRES:

Havells/ Finolex make

SWITCHES:

Elegant designer modular switches of ABB/ Havells make or equivalent

AC POINTS:

Provision in all bedrooms

AQUAGUARD:

Provision in kitchen

PAINTING:

Emulsion paint for the internal walls and Apex Synthetic water-proof paint for external walls.

INTERCOM:

Intercom facility from each apartment to Security room

LIFTS:

5 Nos. of 6-passenger capacity each of Kone or equivalent make

WATER:

Water filtration and softener equipment, Rain water harvesting system



*Choose a home by
Experienced builders*

When you choose a home done by an experienced builder, the difference is evident. The designs Vishnu Priya Group use are futuristic and the quality will be perfect. After 30 residential projects since 1990, the company has learnt to convert engineering into an art form. What you pay is for an apartment and what you get is a lifestyle environment at every Vishnu Priya project. You will find refinement at every step and every square foot transforming into magical space. The stamp of Vishnu Priya Group is essentially an assurance of value for customers.



Parimala Sunridge, Siddapura, Whitefield Road



Pearl Wood
AECS Layout



Laxmi Chambers
AECS Layout



Parimala Harmony
AECS Layout



Parimala Vintage
Panathur, Outer Ring Road



Parimala Trinity, Panathur, Outer Ring Road



Parimala Residency
AECS Layout



Parimala Orchid
AECS Layout



Parimala Elan, Marathahalli
Behind Kalamandir



Parimala Winsome
AECS Layout



Note: This brochure is only a conceptual presentation and not a legal offering. The promoters reserve the rights to alter and make changes in elevation, highlights, plans, areas and specifications as deemed fit

PROMOTERS



VISHNU PRIYA GROUP OF BUILDERS & DEVELOPERS

#187, Ganesh Temple Road, AECS Layout
Opp. Brookfields, Kundalahalli, Bangalore - 37

Call: 76 76 76 55 99

E-mail: riviera@vishnupriyagroup.com
www.vishnupriyagroup.com

ARCHITECTS



ASLAM ARCHITECTS & INTERIOR DESIGNERS PVT LTD

#87, Nanda Deep Kumara Krupa Road, Kumara Park East
Bangalore - 01. Ph: +91 080 2225 3532, 2225 9342

STRUCTURAL CONSULTANTS



ACME Consultants Inc.

#8, 2nd 'I' Main 60 Feet Main Road, Boopsandra, New Extension
Bangalore - 94. Ph: +91 80 2341 8378 / 2341 8379
Email: acmeconsultants.inc@gmail.com

LANDSCAPE ARCHITECTS



Bangalore

